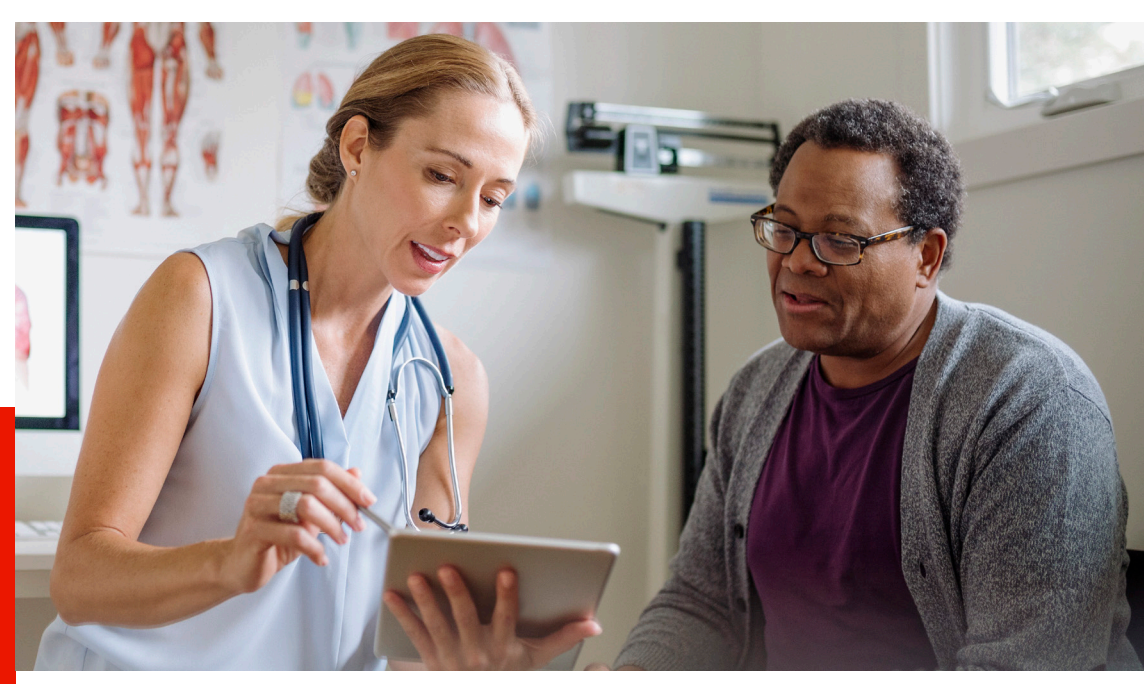


Addressing the Racial Health Gap in Lung Cancer

How Johnson & Johnson is working to improve early-stage lung cancer detection by focusing on screening barriers and inequities



Lung cancer is the #1 cause of cancer death for all U.S. adults, and Black men have the highest death rate of any other racial or ethnic group.¹

Black people in the U.S. with lung cancer are:

15%↓

less likely to be diagnosed early

19%↓

less likely to receive surgical treatment

12%↓

less likely to survive 5 years than White people in the U.S.²



Bringing critical awareness to lung cancer screening



More than half of all patients newly diagnosed with lung cancer have advanced or metastatic disease – meaning their cancer has already spread outside the lung.³



Advanced stages of lung cancer are more challenging to treat.⁴

This is why early diagnosis is key to better outcomes.



Screening can improve early detection in people who are at higher risk of developing lung cancer, yet screening rates remain low – especially among eligible Black patients.¹

To improve early-stage detection and address racial inequities, Johnson & Johnson is collaborating with a national health system on a framework to build scalable programs for lung cancer screening across geographies and systems.



Framework Tenets



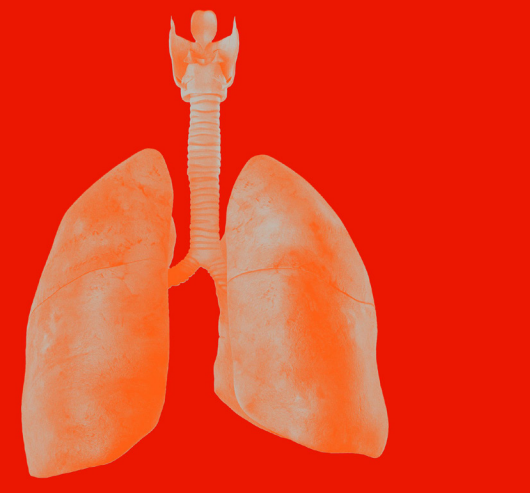
Leverages data, care navigators, behavioral science and community activation



Reaches high-risk patients who are eligible for lung cancer screening and guides them through the process



Optimizes communication between eligible patients and their healthcare providers



Founded on multiple evidence-based theories and principles



Focuses on understanding, connection, and empowerment

Our Impact

The framework was piloted in collaboration with a health system, where we:

- Raised awareness around lung cancer screening challenges and inequities
- Implemented a behavior-based care navigation program to reach high-risk individuals
- Promoted effective shared decision-making between healthcare providers (HCPs) and screening candidates
- Expanded awareness of lung cancer screening in communities, among patients and HCPs
- Found key community stakeholders who are aligned to lung cancer initiatives aimed at decreasing disparities among marginalized populations
- Identified resources and provided potential solutions to barriers to care



What's next?

Program evaluation and performance metrics are being implemented to ensure the pilot program is working as designed and that goals are effectively met.

These metrics facilitate learning and iterating, so that building on the success of our pilot program, this framework can be used to impact early lung cancer screening awareness and activations across additional communities in need in the U.S.

Johnson & Johnson is committed to help end racial and social injustice as a public health threat by eliminating health inequities for people of color. Through Our Race to Health Equity, which includes programs like this one, we aim to create a movement to rebuild healthcare from a diverse perspective by supporting solutions that systemically address racial health equity.



References

- ¹American Cancer Society. Key Statistics for Lung Cancer. Accessed March 2023. Available at: <https://www.cancer.org/cancer/lung-cancer/about/keystatistics.html>.
²American Lung Association. State of Lung Cancer 2022: Racial and Ethnic Disparities. (2022). Accessed March 2023. Available at: <https://www.lung.org/research/state-of-lung-cancer/racial-and-ethnic-disparities>.
³Basumalik N, Agarwal M. Small Cell Lung Cancer. [Updated 2022 Jul 12]. In: StatPearls [Internet]. Treasure Island (FL): StatPearls Publishing; 2023 Jan. Available at: <https://www.ncbi.nlm.nih.gov/books/NBK482458/>.
⁴National Cancer Institute. SEER cancer stat facts: Lung and bronchus cancer. Available at: <https://seer.cancer.gov/statfacts/html/lungb.html>. Last accessed: July 2023.